



Lump wood boiler **HVZ25L**

Power range: 12,5-25,0 kW

Electrical connection: 230 VAC / 50 Hz / 10 A /
P+N+PE

- ✓ Boiler body with efficient insulation
- ✓ Temperature-resistant tubular heat exchanger
- ✓ Safety heat exchanger
- ✓ Firing system with high-temperature fireclay combustion chamber
- ✓ Combustion chamber panels
- ✓ Integrated threshold gas extraction
- ✓ Speed-controlled induced draught fan
- ✓ Primary and secondary air control drives
- ✓ Lambda sensor
- ✓ Touchscreen with simple, clearly designed menu navigation

SPECIAL FEATURES

- ✓ Control of one mixed heating circuit including heating circuit and outdoor temperature sensor, buffer including 2 buffer sensors, hot water boiler
- ✓ Rear flue pipe connection

NOTE:

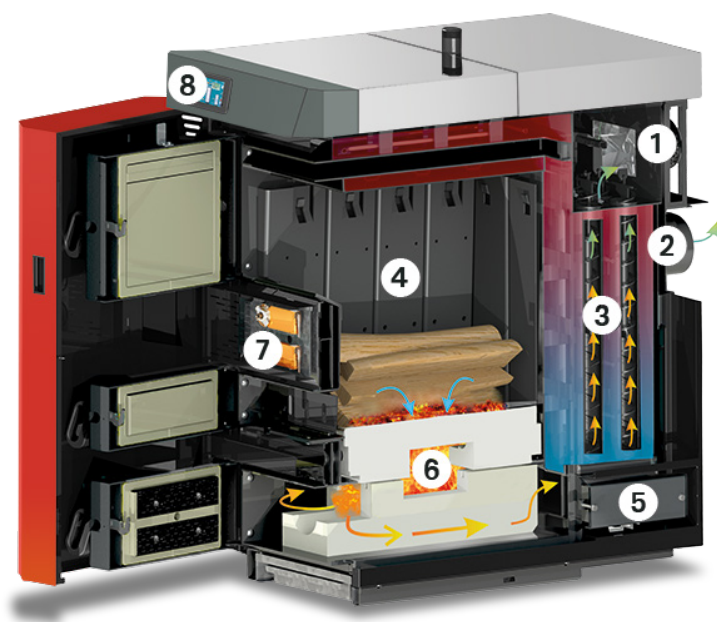
- ! Return flow boost required



Boiler has 3 doors, through its separate filling and heating door easy heating and reheating



Ember retention function with message via LED or signal sound when to add logs (optional)

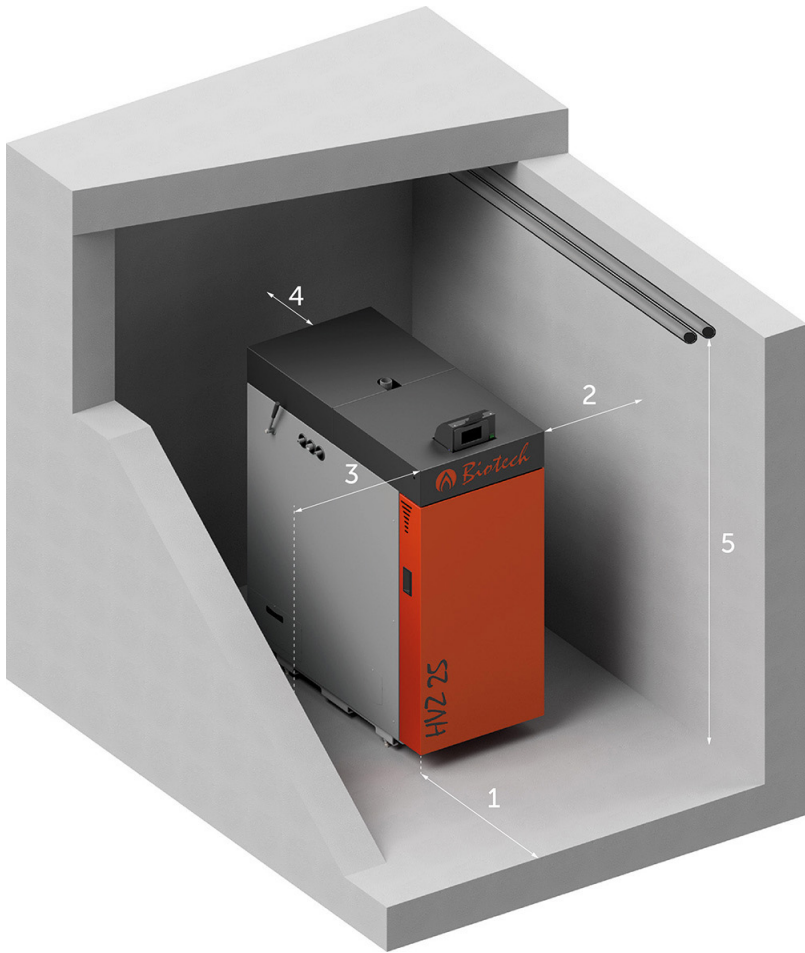


- 1 Induced draught fan
- 2 Lambda sensor
- 3 Heat exchanger
- 4 Combustion chamber panels
- 5 Cleaning opening
- 6 High temperature fireclay combustion chamber
- 7 Primary and secondary air control drive
- 8 Touchscreen

BOILER TYPE	HVZ25L
Boiler class	5
Nominal heat output (kW)	25,0
Efficiency full load (%)	93,1
Heat output range (kW) (kW)	12,5 - 25,0
Permissible operating pressure (bar)	2,5
Test pressure (bar)	5,5
Pressure condition combustion chamber	Unterdruck
Recommended minimum storage volume (l)	2000
Max. Boiler temperature (°C)	90
Pressure loss at nominal load (mbar)	9
Return lift group Opening temperature (°C)	60
CE marking according to Low Voltage Directive	CE
Energy efficiency class	A+
DIMENSIONS	
Boiler width (mm)	588
Depth boiler (mm)	1385
Boiler height (mm)	1347
Height flue pipe connection (mm)	756
Flue pipe connection diameter (mm)	150
Total weight loose (kg)	519
Water content (l)	115
Combustion chamber volume (l)	90
Filling space depth (mm)	600
Filling space Height (mm)	600
Filling space width (mm)	250
FUEL	
Logs according EN14961-5	
Max. water content	25
Max. log length (mm)	550

CONNECTIONS	
Forward (Zoll)	1 ½
Return (Zoll)	1 ½
Safety heat exchanger (Zoll)	¾
Boiler draining (Zoll)	¾
THERMAL DISCHARGE SAFETY DEVICE	
Flow rate (m³/h)	1,5
Min. pressure (bar)	2,0
Max. temperature (°C)	10-15
EXHAUST VALUES	
Exhaust gas temperature full load (°C)	140
Exhaust gas temperature part load (°C)	110
Exhaust gas mass flow full load (g/s)	19
Exhaust gas mass flow partial load (g/s)	10
Necessary chimney draught (Pa) ¹	8
ELECTRICAL POWER CONSUMPTION	
Rated voltage (W)	230
Frequency (Hz)	50
Rated current (A)	10
Max. electrical power (W)	135
Electrical power consumption during operation (W)	60-110
MINIMUM DISTANCE MASONRY	
To the back (mm)	500
To the front (mm)	900
Left to masonry (mm)	750
Right to masonry (mm)	200
Minimum room height (mm)	1900
INSERTION DIMENSIONS	
At least (mm)	750

1) From 10 Pa, a suitable draught limiter must be used below the firing connection



Lump wood boiler

HVZ25L

MINIMUM DISTANCE
MASONRY

- 1: 900 mm
- 2: 200 mm
- 3: 750 mm
- 4: 500 mm
- 5: 1900 mm

